



SURVEY ON MULE SOFTWARE

Syed Zubair Ahmed G A

Lecturer, Dept of MCA, Al Ameen Institute Of Information Sciences,
Bangalore, Karnataka, India
E-mail: syedzubair305@gmail.com

ABSTRACT

MULE is a lightweight Enterprise Service Bus (ESB) and mix system developed by MuleSoft. The Platform is Java-based, however can represent collaborations between different stages, for example, .Net utilizing web administrations or attachments. It is a coordination stage that enables designers to interface applications together rapidly and effectively, empowering them, to trade information. It empowers simple coordination of existing frameworks, paying little mind to various advances that the applications utilize, including JMS, Web Services, JDBC, HTTP, and that's just the beginning. The ESB can be sent anyplace, can incorporate and coordinate occasions continuously or in cluster, and has widespread availability.

KEY WORDS: Mule, ESB, application, bus.

INTRODUCTION: In the event that we think about the inheritance incorporation and ESBs and representatives, the greater part of them were constructed fifteen years prior, so they tackle just a subset of the present mix challenges. These were and stay substantial weight stacks costly to rollout and keep up the persistently impervious to change. MuleSoft in stack differentiate is currently driving the route with Mule venture which was worked to be lithe in its capacity to adjust the progressions which fundamentally happen in any organization's business forms [1].

Business achievement relies upon interfacing the detached. To dispatch another item, make another administration or enhance what you as of now have, associations need to interface applications, information and gadgets," said Ross Mason, originator and VP of item procedure, MuleSoft. "It's obvious from this report organizations are appreciating that fact. They're grasping microservices. They're making versatile applications. They're laying the foundation for a universe of associated sensors. Most importantly, they're grasping APIs to make every one of these associations effectively. They comprehend that APIs aren't simply instruments for

combination. They're an approach to construct a composable business that can adjust, develop and change itself quicker than the opposition[2].

MuleSoft Survey Finds Connectivity in Driving Business Strategy, Cloud and Mobile Top the Business Agenda, but Micro services and the Internet of Things Are Coming Up Fast.

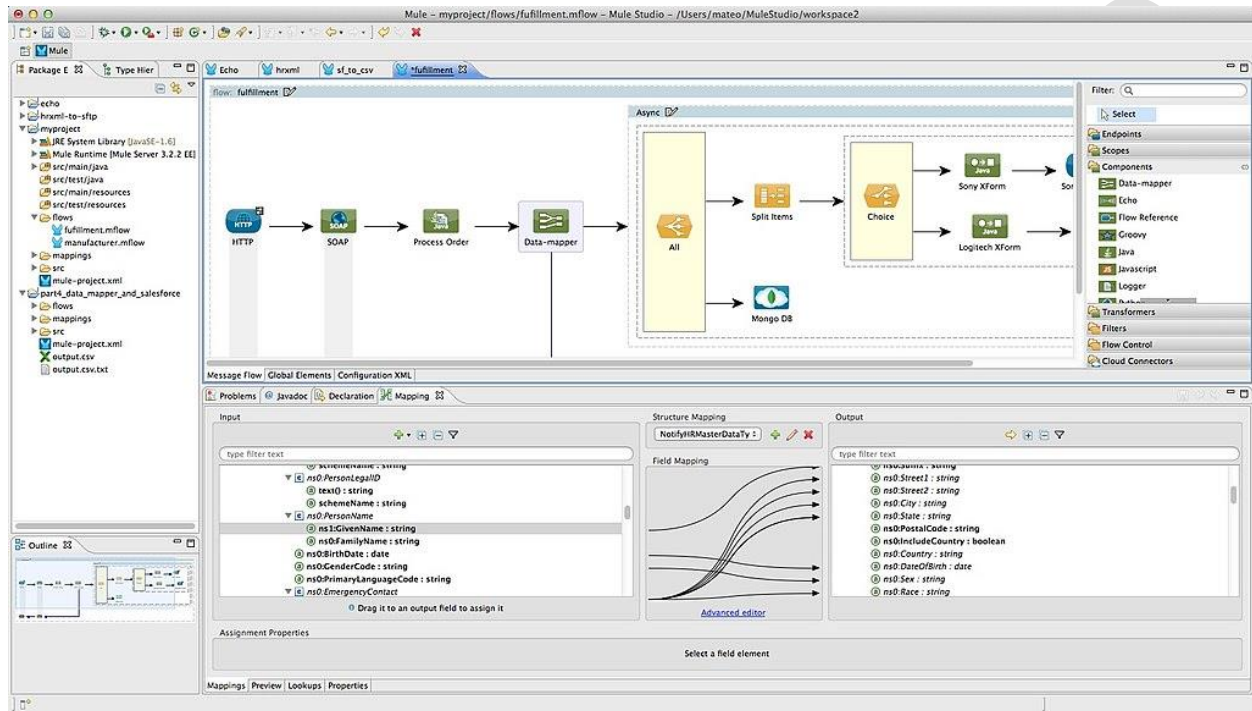


Figure1: Mule studio

OUTLINE AND DEVELOPMENT TOOLS

- Anypoint Studio: An Eclipse-based graphical progression condition for illustrating, testing and running Mule streams. It includes two sorts of editors for headway: Visual article chief and XML director.
- Anypoint Enterprise Security: A suite of security-related highlights for secure access and exchanges to Mule applications.
- Mule Healthcare Toolkit: Provided to process HL7 standard messages utilized as a part of human services associations.
- Mule IDE (now deplored): An arrangement of Eclipse modules for creating, sending and overseeing Mule ventures.

MANAGEMENT TOOL

- Mule Management Console: A UI which gives run time administration office of arrangement to the Mule Repository and bunches.

Mule has a mix motor, yet the group version does not have the help for Advanced Management interfaces. MuleSoft offers an Enterprise Edition of Mule that gives an administration reassurance, a Service registry and higher accessibility[3].

UNIVERSAL MESSAGE OBJECT

The Universal Message Object Application Programming Interface is a piece of abnormal state plan approaches used to depict and characterize parts of an information protest utilized as a part of conjunction with the Mule ESB. The thought is to, by arranged occasions, wrap the work into sensible packages and process it in stages that can comply with models of exchange based preparing that are helpful in time or mission-basic applications, for example, budgetary exchanges, where consequent effective results are required to allow the coveted result. Yet, in the event that the client neglects to supply required information or a run-time mistake happens, at that point the model will take into consideration stateful backoff, signifying "no mischief done", the client may then total an exchange without losing excessively, work or scratching off a whole exchange[4].

ESB(Enterprise Service Bus)

The key favorable position of an ESB is that it enables distinctive applications to speak with one another by going about as a travel framework for conveying information between applications inside your venture or over the Internet. Mule has powerful capabilities that include:

- Service creation and facilitating — uncover and have reusable administrations, utilizing the ESB as a lightweight administration compartment.
- Service mediation — shield administrations from message organizations and conventions, isolate business rationale from informing, and empower area free administration calls.
- Message routing— course, channel, total, and re-grouping messages in view of substance and guidelines.
- Data transformation— trade information crosswise over fluctuating configurations and transport conventions

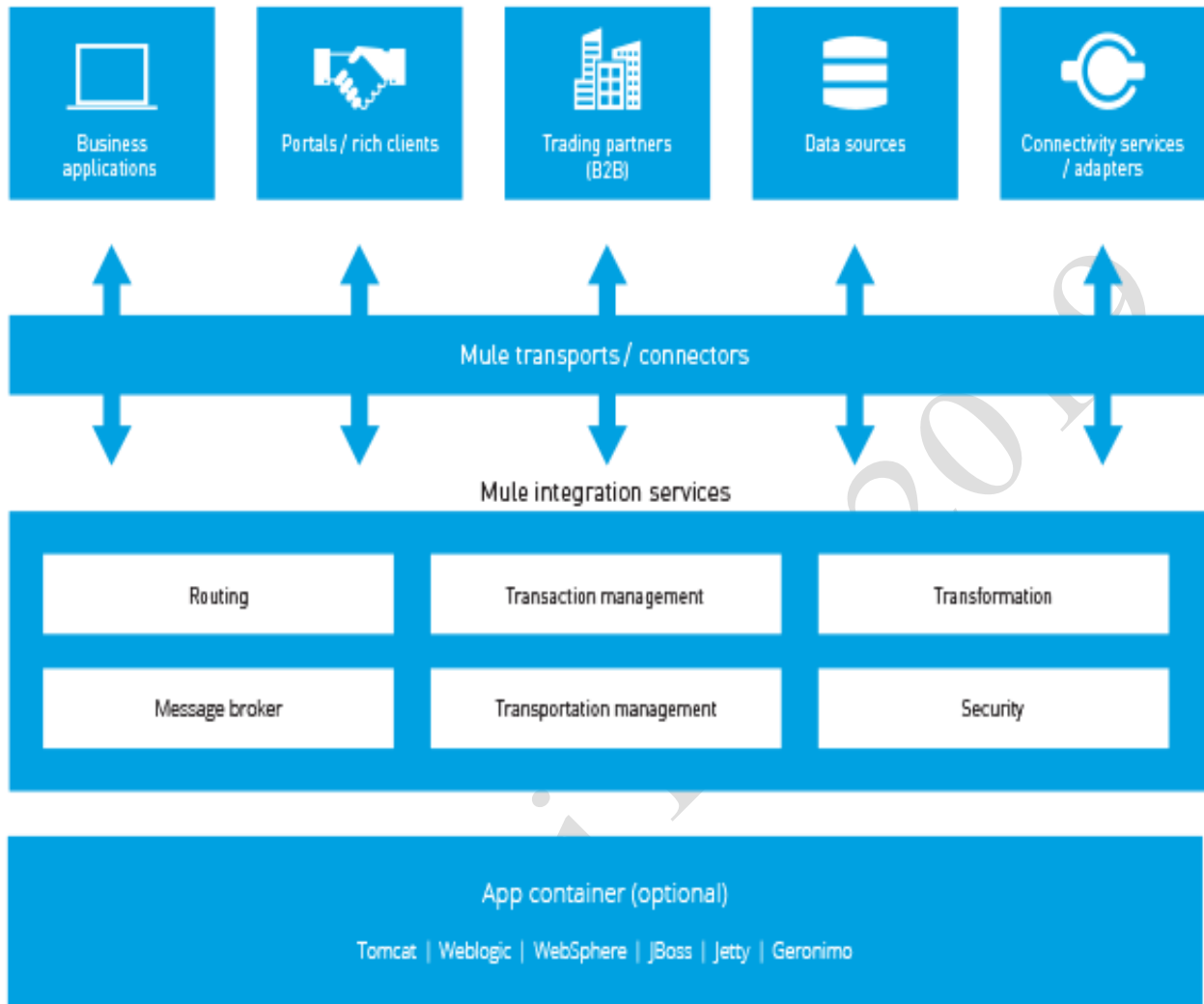


Figure 2: Mule Integration Services

A PANORAMIC VIEW OF MULE ENTERPRISE

MuleSoft's Enterprise Integration Platform covers each zone of the incorporation exertion by giving the best apparatuses available to help with the development, deployment and management of your integration applications. What's more, a long way from obliging you with our method for seeing things, we give you the freedom of expanding Mule. We should investigate the toolset from the perspective of each of these[5]:

1. DEVELOPMENT: It includes:

Building Blocks: Mule Studio Enterprise graphically surfaces the Enterprise Integration Patterns that guided the center design of Mule itself through building squares. These natural dance saw pieces cover all the center fixings found in each mix arrangement, to be specific connectors, transformers, switches and processors and which you can move on to your answer peddle to shape what we get a kick out of the chance to call Flows. As the name recommends, Flows speak to the stream of data through Mule from and to the outside frameworks which you have to coordinate.

1)**Graphical Development:** The graphical interface is a perception of the basic xml area particular dialect which proclaims what you have to do and liberates you from the exertion of working out how to do it! Mule Studio enables you to fabricate your Flows utilizing a two-way editorial manager. Changes in a single view are quickly reflected in the other!

2)**Data Mapping:** A somewhat costly piece of joining shows itself in the need to change extensive arrangements of information starting with one frame then onto the next. This is a typical issue as the different frameworks which you want to incorporate don't generally talk a similar dialect, in a manner of speaking. Mule Studio Enterprise tends to this issue with its capable Data Mapper device. Again, the graphical intuitive mappings let you see initially the points of interest of your change rationale[2][3].

2. DEPLOYMENT: MuleStudio Enterprise diminishes Integration Application organization to a single tick undertaking! The objective of your sending can be the MuleStudio inserted Server, your on-preface Mule Server, the Mule Management ConsoleApplication Repository or even CloudHub, Mule Enterprise on the Cloud!

3. MANAGEMENT: A sent application must be watched and kept up to guarantee plain cruising at each minute. Mule Enterprise Management Console furnishes you not simply with whole perceivability of your answers at each level from Server to Messages yet additionally enables you to follow up on that perceivability by controlling the executions of ancient rarities on similar levels. You can authorize Service Level Agreements on the execution of your applications and servers, get Alerts in light of the same and appreciate careful examination of Key Performance Indicators, so basic to the accomplishment of your business, through Business Events. Investigating any issues with your applications is a breeze with our Message Flow Analyser – a window to the even most moment detail of the messages streaming however Mule. For your more prominent genuine feelings of serenity, access to the Console can be confined by the parts you may as of now have characterized in your LDAP server.

4. **EXTENSION:**Mule covers a universe of network and message handling with its rich offering of endpoints, transformers and switches.

Connecting Endpoints:Concerning network, the variety of endpoints covers the most broadly utilized correspondence instruments. We don't stop there in any case. These interfacing endpoints have been stretched out with our suite of cloud connectors, which enable you to misuse the exponential development in cloud based programming and open APIs. Conversing with any semblance of Salesforce, Twitter and so forth is as basic as utilizing some other endpoint in a Mule stream.

Transformers and Routers:While our huge range of change and directing processors fulfill the dominant part of utilization cases, our Java processors enable you to execute your own particular custom combination rationale. In like manner our Scripting processors enable you to do likewise in Mule Expression Language, Groovy, Python, Ruby, JavaScript, PHP and in fact any dialect which executes the JSR-223 scripting spec for the JVM. These augmentation abilities duplicate the energy of Mule as a reconciliation stage, which is totally versatile to the necessities of the mix venture. As opposed to oblige the engineer, Mule offers itself as an instrument to tackle each incorporation issue with its abundance of out-of-the-case processors and its boundless extensibility[6].

DevKit: Mule's intense expansion capacity is made significantly less demanding with the DevKit, which encourages the embodiment of complex business handling rationale or any perplexing connection with outer frameworks or cloud APIs as an arrangement of message processors which can be displayed on Mule Studio's palette up until now another out-of-the-container stream building square.

PURPOSE BEHIND SUCCESS

The reason behind companies intensely depending on MULE is, all things considered; consider the inheritance coordination ESBs and Brokers. The greater part of them were worked more than fifteen years prior, so they comprehend just a subset of today's reconciliation challenges. These were and remain heavyweight stacks costly to rollout and keep up and are tenaciously resistant to change. Glaring differences, a distinct difference is currently driving the path with Mule Enterprise which was worked to be lithe in its capacity to adjust to the progressions which essentially happen in any organization's business forms. Mule's prosperity can be credited to the accompanying attributes:

1. **It's Open:**It is open-source so you can see the nature of the code yourself, it's based on principles and it's outlined by Industrial best practice to empower consistent correspondence with your current and future framework.

2. It's Light and it's Fast:it can be conveyed in various routes with a remarkable low asset utilization and it out plays its rivals without a doubt!
3. It's Developer friendly:bit's an instrument composed totally for Developers with the expectation to expand their efficiency so you'll rapidly observe the aftereffects of your endeavors.
4. It's Cloud ready:it's worked to keep running on the cloud, we're centered around associating application on-commence and cloud including SaaS, online networking and framework APIs and Mule applications can keep running on-introduce on Mule ESB or in the cloud with CloudHub.

CONCLUSION

"Business achievement relies upon interfacing the detached. To dispatch another item, make another administration or enhance what you as of now have, associations needed to interface applications, information and gadgets. "It's obvious from this report organizations are acknowledging that reality. They're grasping microservices. They're making versatile applications. They're laying the preparation for a universe of associated sensors. Most importantly, they're grasping APIs to make every one of these associations effectively. They comprehend that APIs aren't simply apparatuses for mix. They're an approach to manufacture a composable business that can adjust, enhance and change itself speedier than the opposition."

MuleSoft's main goal is to associate the world's applications, information and gadgets. MuleSoft makes associating anything simple with Anypoint Platform, the main finish mix stage for SaaS, SOA and APIs. A huge number of associations in 60 nations, from rising brands to Global 500 undertakings, utilize MuleSoft to improve quicker and increase upper hand.

REFERENCES

1. Aimrudee Jongtaveesataporn and Shingo Takada Combining the Strengths of BPEL and Mule ESB International Journal of Software Engineering and Knowledge Engineering Vol. 24, No. 03, pp. 347-390 (2014)
2. "Exploring ESB Patterns with Mule Blog - Oracle Community". *Archived from the original on 2009-03-08.*
3. <http://www.mulesoft.org/documentation/display/current/AMQP+Connector>
4. Barr, John and L.A. Smith King, "An Environment for Interpreterbased Projects for the Programming Languages Course", National Science Foundation DUE CCLI-EMD 9952398, January 2000 – June 2001.
5. [3] Barr, John and L.A. Smith King, "Interpreter-based Projects for a Traditional Programming Languages Course", The Journal of Computing in Small Colleges, Volume 10, Number 2, November 1994.
6. [4] Barr, John and L.A. Smith King, "An Environment for Interpreterbased Programming Language Projects", twenty-sixth SIGCSE Technical Symposium on Computer Science Education, Volume 26, Number 1, March 1995.

Navajyoti Feb 2019